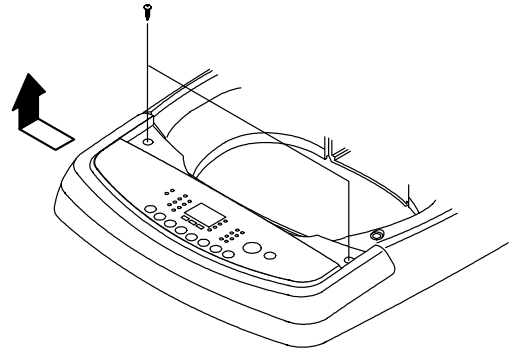


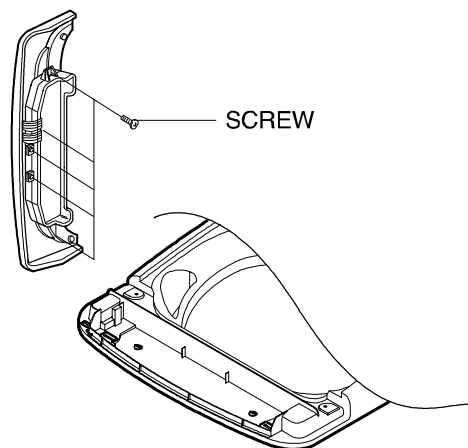
## 6. HOW TO DISASSEMBLE

### 6-1 REPLACEMENT OF MAIN PCB-ASS'Y

- 1) Remove the two cover-screw and then a screw 2EA as shown in the figure
- 2) Lift up the CONTROL-PANEL by pushing it slightly from right to left as shown in the figure here.

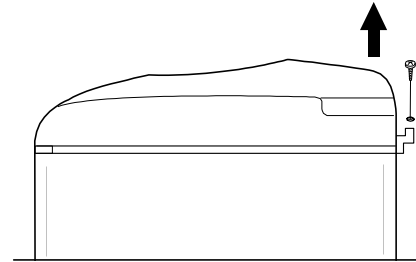


- 3) Turn the CONTROL-PANEL ASS'Y and remove 4EA screws securing PCB ASS'Y.
- 4) Raise the ass'y gently to the direction to which the screw are removed in order to separate the ass'y.
- 5) Disconnect the Wire Harness from ASS'Y PCB.
  - Do not allow wire to get too much tension when replacing control-panel.
  - When assembling PCB, check if CONTROL-PANEL fixing HOOK is properly positioned and tighten with screws. (If not tightened exactly, Select S/W does not operate.)
  - Check the working condition of each parts (use test mode)



## 6-2 REPLACEMENT OF PRESSURE-SENSOR, WATER-VALVE, GUIDE-WATER, AND CHECKER-ASS'Y

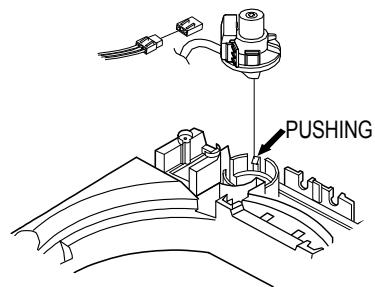
- 1) Remove 2 screws(rear part) securing TOP-COVER, COVER-T.C, and remove them by lifting COVER-T.C to the arrow direction.



### 2) PRESSURE-SENSOR

- After removing terminals of PRESSURE-SENSOR LEAD-WIRE and disassemble by opening the HOOK wide.

\* When reassembling PRESSURE-SENSOR, firstly check AIR-HOSE position and connection status.



### 3) WATER-VALVE

- Remove 2 LEAD-WIRES of WATER-VALVE terminals. Remove SCREW-TAP, TH 3EA securing WATER-VALVE of ASS'Y-DETERGENT located inside the TOP-COVER and then remove ASS'Y WATER-VALVE.

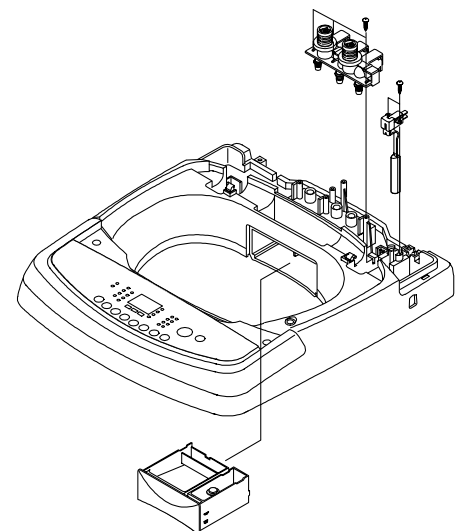
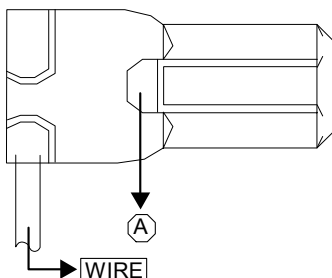
\* Secure WATER-VALVE after checking if CAP- RING is not missing. (without CAP-RING there may be dangers of SHOT due to water leakage)  
 \* ASS'Y is the one body of top-cover

- 4) When opening the LIC-TC, guide water can be united until being in sight of screw.

- 5) Remove LEAD-WIRE of CHECKER-S/W and then remove 2 screws securing CHECKER-S/W. (Pressing the hook can open the lead-wires)

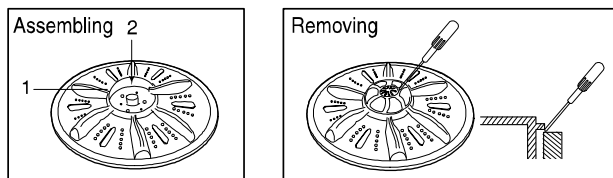
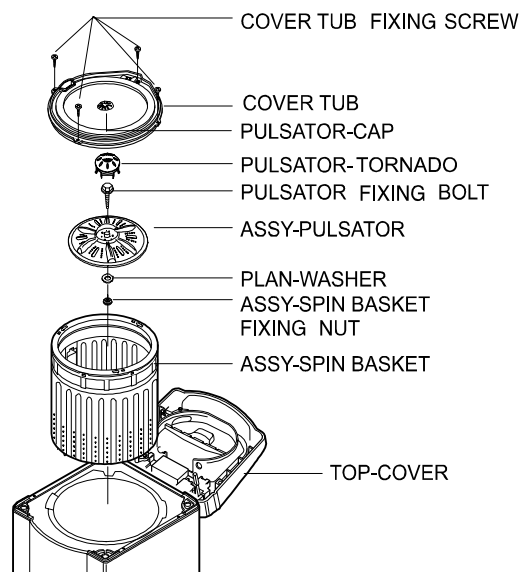
\* How to release DOOR/UNBALANCE S/W

- When replacing defective wires, remove the switch while holding down the (A) part. (It is not released by pulling out the wire.)



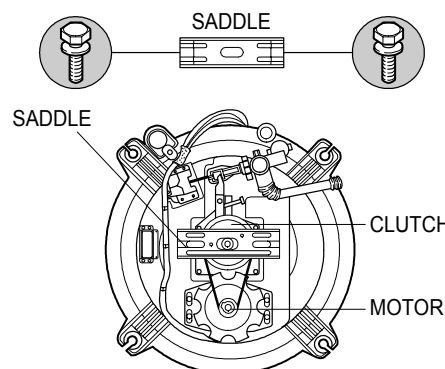
### 6-3 Replacement of CLUTCH ASS'Y

- 1) After removing CONTROL-PANEL
  - 2) Remove COVER-SCREW 2EA(R·L) in CONTROL-PANEL by using a pin and remove a SCREW 2EA(R·L) securing CONTROL-PANEL by using a (+) driver and then remove CONTROL-PANEL by pushing it slightly to left.
  - 3) Remove screws (2EA in rear, 2EA in front) securing TOP-COVER and remove SCREW securing EARTH IRE and then lift TOP-COVER ASS'Y backward.
  - 4) Remove 4 screws securing COVER-TUB and take COVER-TUB out.
  - 5) Remove PULSATOR-CAP by using a pin. After inserting the (-) driver between the PULSATOR-CAP + PULSATOR, disassemble by pushing it upward(↑).
- ※ Fix in the groove of ① and assemble by pushing ②.



- 6) Remove a bolt securing the PULSATOR using 10mm box and lift it up.
- 7) Remove a nut securing ASS'Y SPIN BASKET and CLUTCH by using a ZIG box and take ASS'Y SPIN BASKET out.

※ NUT unlock : clockwise  
NUT lock : counter-clockwise



- 8) Lay down the washing machine so that the front of OUT-CASE faces upward and remove 4 bolts securing SADDLE by using a 10mm box.
- ※ Be careful not to cause damage or scratch to the washing machine when you lay it down to the floor.
- 9) Remove BOLT 4EA securing CLUTCH by using a 10mm box and take CLUTCH-ASS'Y out. (Check the CLUTCH status as shown in the figure here.)

※ Assembling is in reverse order as disassembling.

#### Points to check after replacing ASS'Y CLUTCH

- 1) Check if TOOTH is joined by 3.5mm~5.5mm, 2.0mm~4.5mm depth to the blades of SLEEVE while the washing is in operation. (with Drain Motor OFF)
- ※ If the joining depth is not deep enough, there may be a problem during washing.
- 2) Check if TOUCH maintains at least 1.5mm distance from the edge of SLEEVE during spinning. (with Drain Motor OFF)

